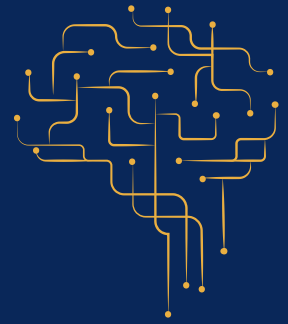


# Tourism Investment Hub



## Overview - Tamandaré/PE



### Municipality projects

- Carneiros Resort

### Demographic data (IBGE)

Estimated population [2020]

**23.623 people**

Demographic density [2010]

**96,66 hab/km<sup>2</sup>**

Average monthly salary of formal workers [2018]

**1.5 minimum wage**

Working population [2018]

**15.3 %**

School enrollment rate from 6 to 14 years of age [2010]

**95.5 %**

GDP per capita [2018]

**R\$ 12,486.08**

Territorial unit area [2020]

**213.750 km<sup>2</sup>**

Adequate sanitation [2010]

**17.9 %**

Afforestation of public roads [2010]

**70.3 %**

Urbanization of public roads [2010]

**0 %**

Biome [2019]

**Atlantic forest**

### IBEU - Urban Wellbeing Index

**IBEU - 0.656**

Mobility- **0.950**

Environmental- **0.762**

Housing - **0.775**

Services - **0.533**

Infrastructure - **0.260**

### Tourism Governance Institutions

- Tamandaré City Hall
- Municipal Council of Tourism of Tamandaré

### Tax collection (2020)

IPTU

**R\$ 5.420.219,88**

ISS

**R\$ 2.143.612,85**

### Tourism service providers registered in CADASTUR (1° / 2021)

Tourist guides

**4**

Tourist camps

**0**

Tourism agencies

**9**

Accommodation means

**19**

Thematic parks

**0**

Tourist carriers

**45**

Concert halls

**0**

Convention centers

**0**

Nautical Tourism and Sport

Fishing

**4**

Entertainment, Leisure and

Water Parks

**0**

Car rental

**0**

Event organizers

**0**

Infrastructure services for events

**0**

Tourist segments

**5**

Food and drinks

**14**